

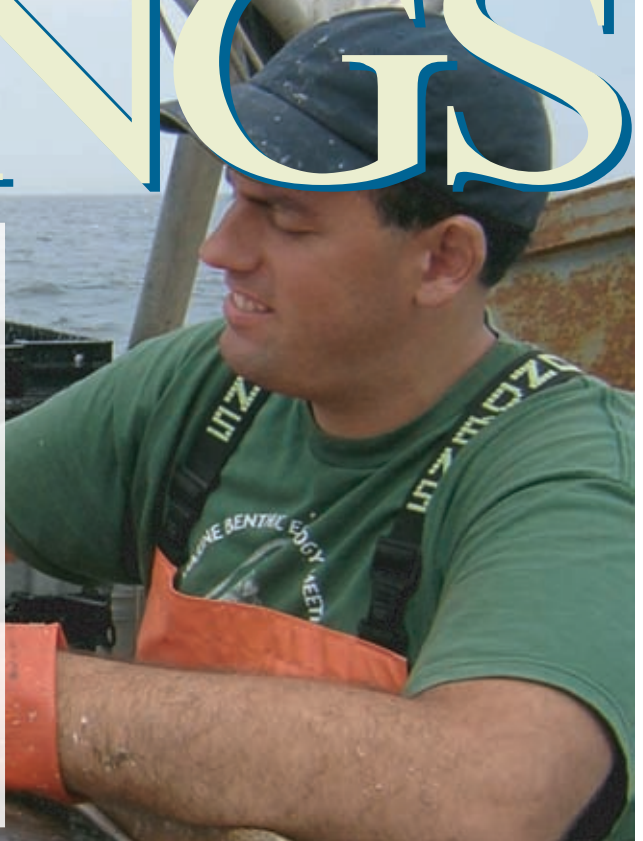
Winter  
2006

# TIDINGS

## Grabowski Named Benthic Ecologist

Jonathan Grabowski, Ph.D., (University of North Carolina, Chapel Hill) has recently become a permanent member of GMRI's interdisciplinary fishery ecosystem research team as our Benthic (seafloor) Ecologist. Jon began working with GMRI in 2002 when he took on a challenging project to quantify the impact of herring bait on lobster populations in the Gulf of Maine – the question of “are we farming lobster” is of great interest to the lobster industry. He has also led a number of investigations assessing nursery habitat in the Gulf of Maine, Alaska, North Carolina, and Florida. His expertise is helping to unlock critical relationships between benthic habitat and commercial fish species in the Gulf of Maine.

*“Working at GMRI allows me to interact with a highly motivated and innovative research and education staff. Together with the fishing industry, academic community, and government scientists, we are addressing fisheries issues that are relevant not only to the the ecology of the Gulf of Maine, but also to coastal managers and the Maine economy.” – Jonathan Grabowski*



## Investing in the Future of the Gulf of Maine

Community investments in 2005 enabled us to officially open our new facility, hire the first members of our research team, and launch *Next Wave: A Digital Marine Science Experience* (an education program that brings to life the Sam L. Cohen Center for Interactive Learning for Maine middle schools students). Thank you!

In 2006, we will complete our research team and grow our portfolio of research projects aimed at understanding the complexity of our marine ecosystem. We will offer every county in Maine the opportunity to involve their 5th or 6th grade students in hands-on, minds-on marine science at a working laboratory, free of charge. We will continue to forge partnerships among diverse marine stakeholders to cultivate a more thoughtful approach to marine resource management.

Momentum is already building:

An **Anonymous local family** has agreed to provide three years of support for our Benthic Ecology position.

**TD Banknorth** has committed \$200,000 to assist us in building a world-class fishery ecosystem research program.

**UnumProvident** will provide an annual challenge grant of \$50,000 for 3 years to enable Cumberland County middle school classes to participate in *Next Wave*.

Two hundred individuals and small businesses contributed over \$90,000 to our **Annual Fund**. This sets a record for our year-end appeal...but one we hope to exceed in 2006!



Our growing research portfolio already brings scientists and fishermen together on more than 20 projects to increase knowledge of key fish species, essential habitats, and fishing gear technology.

### A warm welcome to our new Board Members:

**Forrest Berkley**, Retired

**Marjorie Dawson**, Portland Pipeline

**Thomas S. Hanson**, Bernstein, Shur, Sawyer and Nelson

**Stephen A. Hutnak**, Certified Public Accountant

**Derek Pierce**, Portland Expeditionary Learning High School

**Gloria A. Pinza**, Pierce Atwood, LLP

**J.B. Sullivan**, Portland Global Advisors

**Robert L. Stephenson**, St. Andrews Biological Station

**Karl Turner**, Senator, Maine State Legislature, District 11

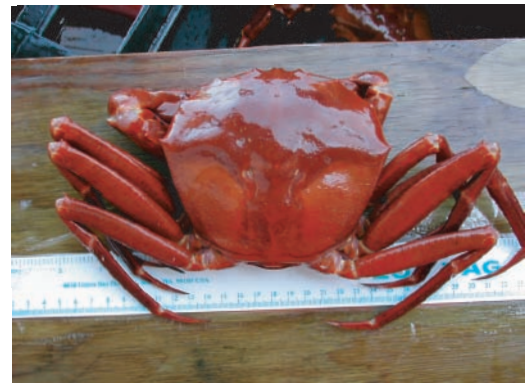
**N E W S**



## Gulf of Maine Research Institute

Science. Education. Community.

350 Commercial Street  
Portland, Maine 04101



A small group of New England fishermen fish for red crabs with traps in deep waters (~800m) over the continental shelf. This fishery is largely assumed to cause little disturbance to the seafloor and other non-targeted species. GMRI's Dr. Shelly Tallack is working with fishermen to identify and quantify the by-catch associated with the red crab fishery, evaluate the survival rate of crabs caught and returned to the ocean (juveniles and females), and test whether the use of an escape vent would allow for a more selective harvest.



Laura Taylor Singer, GMRI Director of Collaborative Research, is managing the Marine Resource Education Program (MREP). Designed to increase the number of fishermen who are comfortable navigating the complex realm of fishery management, MREP provides two different three-day training opportunities. The first course provides an overview of *Fishery Science*, including stock assessment techniques, fish distribution and behavior, and opportunities to get involved in collaborative research. The second course explores the *Management Process* to enable fishermen to understand the structure and purpose of the current fishery management system and how they can have input in the development of future management plans. Both courses were offered in Newport, Rhode Island in January 2006 and will be held again in northern New England in May 2006. Fishermen receive a stipend for completing each course and travel expenses, lodging, and meals are covered by the program.

## Vital Signs: Monitoring Invasive Species

GMRI's Sarah Kirn and Sarah Morrisseau are working with Maine educators, scientists, and resource managers to adapt *Vital Signs* to provide the tools and training to enable students to help protect Maine's coastal and inland waterways from the



threat of invasive species. Invasive species degrade wildlife habitat, cause extinction of native flora and fauna, impair recreational use of water, diminish property values, and reduce shellfish and finfish resources. More trained eyes in the field are desperately needed to monitor Maine's 6,000 lakes and ponds, 32,000 miles of rivers and streams, and 3,500 miles of coastline efficiently. *Vital Signs: Monitoring Invasive Species* will enable students to identify and document invasive plants and animals in their local streams, lakes, wetlands, or coastal environments. Students will upload their observations to a publicly accessible online database where the information will be displayed on interactive maps. This geographic context will assist students, scientists, resource managers, and volunteer groups in locating invasive species populations, monitoring trends, and targeting scarce resources more effectively.